

Using the S-WISP Wireless Network with Windows Laptops

S-WISP: Secure. Fast. Reliable.

Please note: Malaspina Commons staff have tested the information presented in this guide, and are pleased to offer it to our students and employees as a help resource. The guidance offered in this document is to be executed by the user, at the user's own risk. Because user-owned equipment is subject to variability in capability and configuration, we cannot guarantee connectivity to VIU's network services.

What is S-WISP and why should I use it? S-WISP is an alternative wireless network to WISP. S-WISP is faster than WISP, and it is also more secure: data transmitted over S-WISP are encrypted, meaning they cannot be deciphered by others on the network. This is very important if you use wireless networking for confidential transactions such as accessing your student record, online banking, and online shopping by credit card.

Who can use S-WISP? Use of S-WISP is limited to VIU students and employees, and is subject to the terms and conditions specified in Vancouver Island University's **Policy on Use of Information Technology**.

S-WISP pre-requisites:

- **Windows XP**
- **Service Pack 2** for Windows XP, which you can download from the Microsoft® website at <http://www.microsoft.com>
- **A wireless network card/adaptor that supports WPA (Wi-Fi Protected Access) security** as well as the 802.11b or 802.11g (Wi-Fi) wireless networking standard. If your wireless network card/adaptor does not support WPA security, you may be able to update it by installing recent drivers for your card. Check the card/adaptor manufacturer's web site for updated drivers. Other driver download sites include <http://driversplanet.com>, <http://www.driverzone.com>, <http://www.totallydrivers.com>, or <http://www.driverguide.com>.
- You must **use Windows to configure your wireless connections**, rather than a third-party utility.
- A **VIU network account**: a DISCOVERY account for students and a CAPITAN account for employees

Configuring S-WISP (one-time only setup)

Open the **Control Panel** (available in the Start menu). Double-click on the **Network Connections** icon. If necessary, switch to **Classic View** by clicking the "Switch to Classic View" link on the left side of the Control Panel window.



Right-click on the **Wireless Network Connection** icon and select **Properties**.



LIBRARY INFORMATION COMMONS

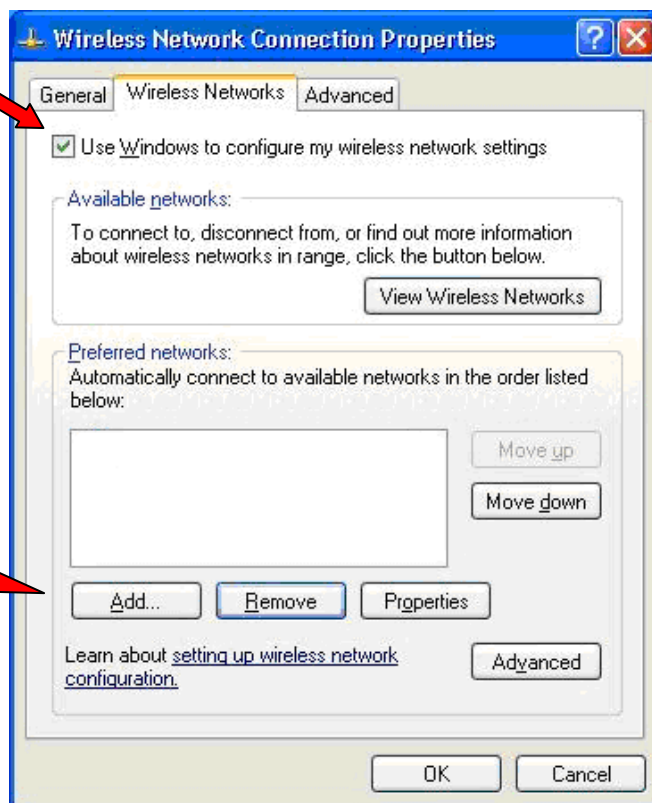
In the **Wireless Network Connection Properties** dialogue box, click the “Wireless Networks” tab and configure the following settings:

Check the box next to “Use Windows to configure my wireless network settings”

If you do not see the Wireless Networks tab, you may be using a third-party utility to manage your wireless connections. You may need to uninstall your utility in order to switch to Windows for wireless settings management.

If you choose to uninstall your third-party utility, you do so at your own risk. If you do not want to switch to Windows, but rather keep using your third-party utility, you can try adapting the settings described in this guide to your utility.

Click the **Add** button.



Under the **Association Tab**, configure the following settings:

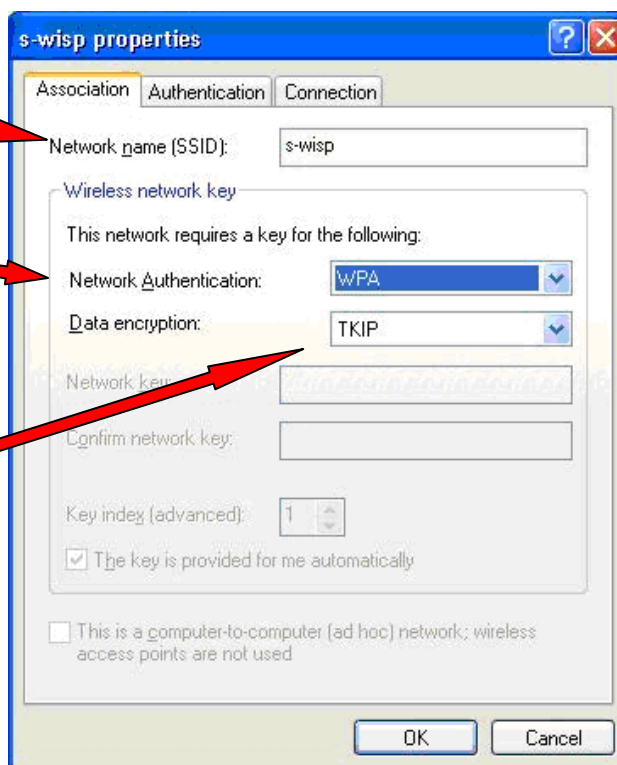
If the Network name (SSID) field is blank, type “**s-wisp**” in the field.

Choose **WPA** from the “Network Authentication” drop-down list.

Note: If WPA doesn’t appear in the drop-down list, download and install Windows XP Service Pack 2 (www.microsoft.com) and the latest drivers for your wireless network card.

Choose **TKIP** from the “Data encryption” drop-down list.

Click the **Authentication** tab at the top of the dialogue box.

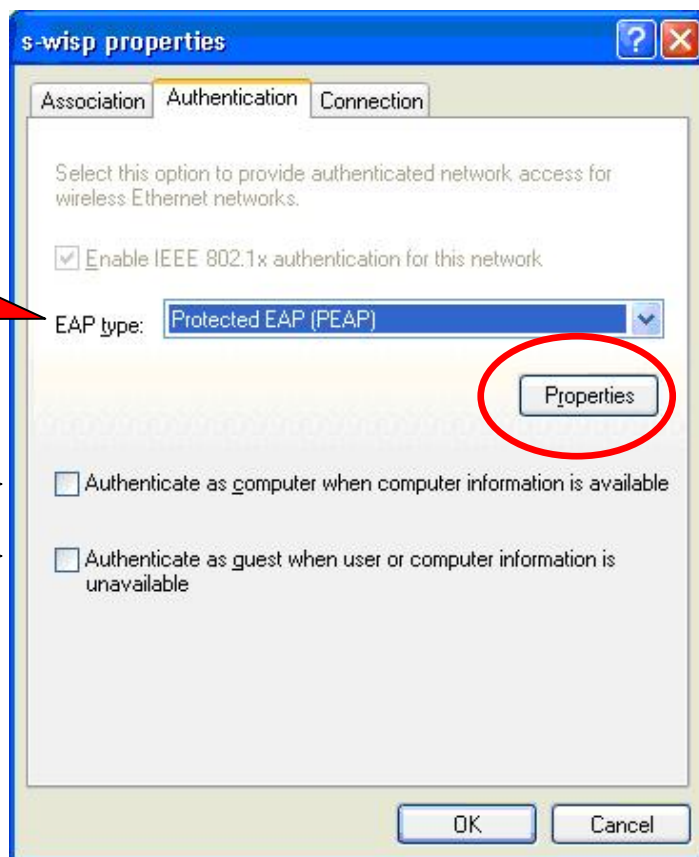


Under the **Authentication Tab**, configure the following settings:

Choose **Protected EAP (PEAP)** from the "EAP type" drop-down list.

Ensure that the two check boxes are **not checked**.

Click the **Properties** button.



In the **Protected EAP Properties** dialogue box, configure the following settings:

Check the box next to "Validate server certificate".

Check the box next to "Connect to these servers:" and type the following into the server field, exactly as shown:
raza.discovery.mala.bc.ca;king.discovery.mala.bc.ca

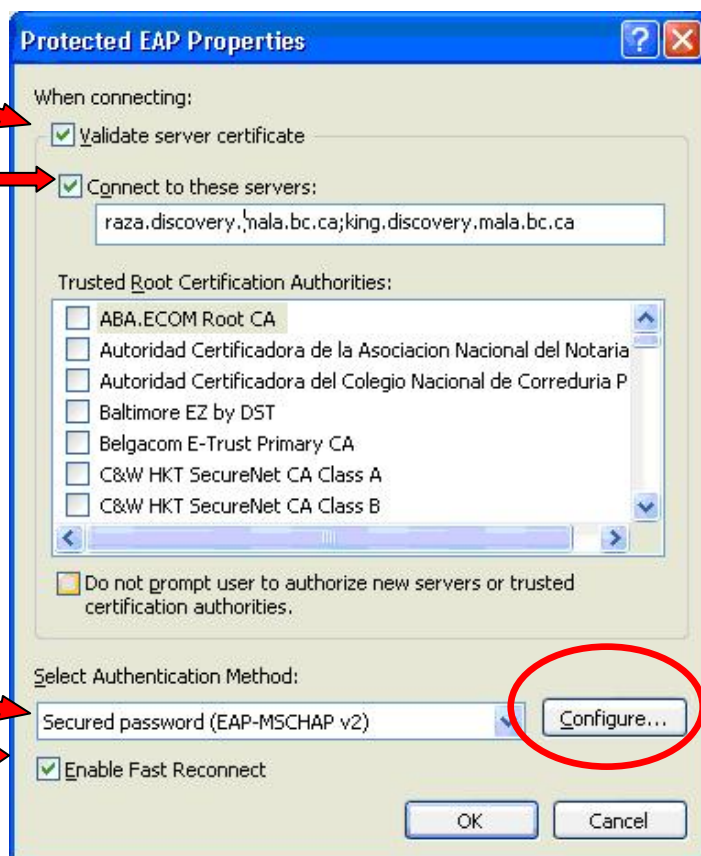
Do not include any spaces on either side of the semi-colon separating the server addresses.

Do not check any boxes under "Trusted Root Certification Authorities". Do not check the box next to "Do not prompt user to authorize new servers or trusted certification authorities".

From the drop-down list under "Select Authentication Method", select **Secured password (EAP-MSCHAP v2)**.

Check the box next to "Enable Fast Reconnect"

Click the **Configure** button.

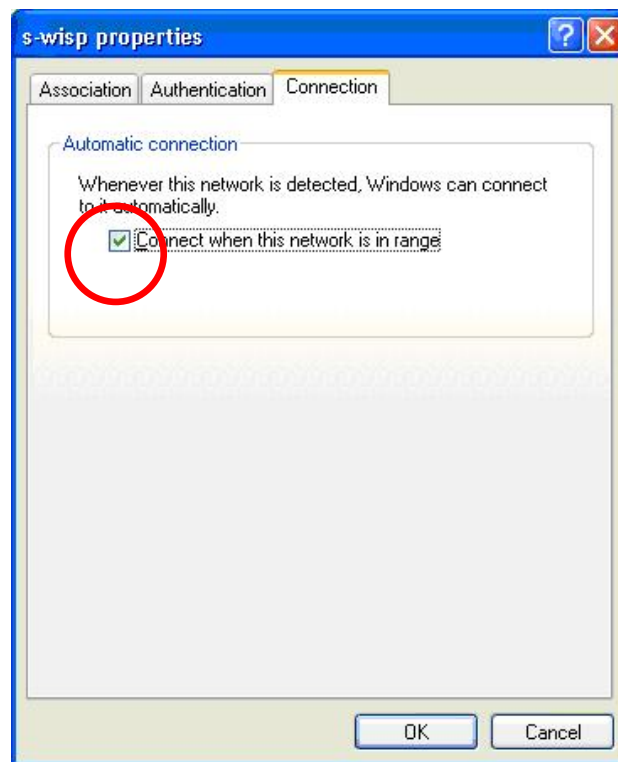


Ensure that the check box in the **EAP MSCHAP v2 Properties** dialogue box is **NOT** checked.



Click **OK** on the EAP MSCHAP v2 dialogue box,
Click **OK** on the Protected EAP Properties dialogue box.

In the **s-wisp properties** dialogue box (it may be labeled "Wireless Network Properties"),
Click on the **Connection** tab
Check the box next to "Connect when this network is in range".



Click **OK**, and click **OK** again.

Restart your computer.

Using S-WISP

Open the **Control Panel** (available in the Start menu) and Double-click on the **Network Connections** icon:



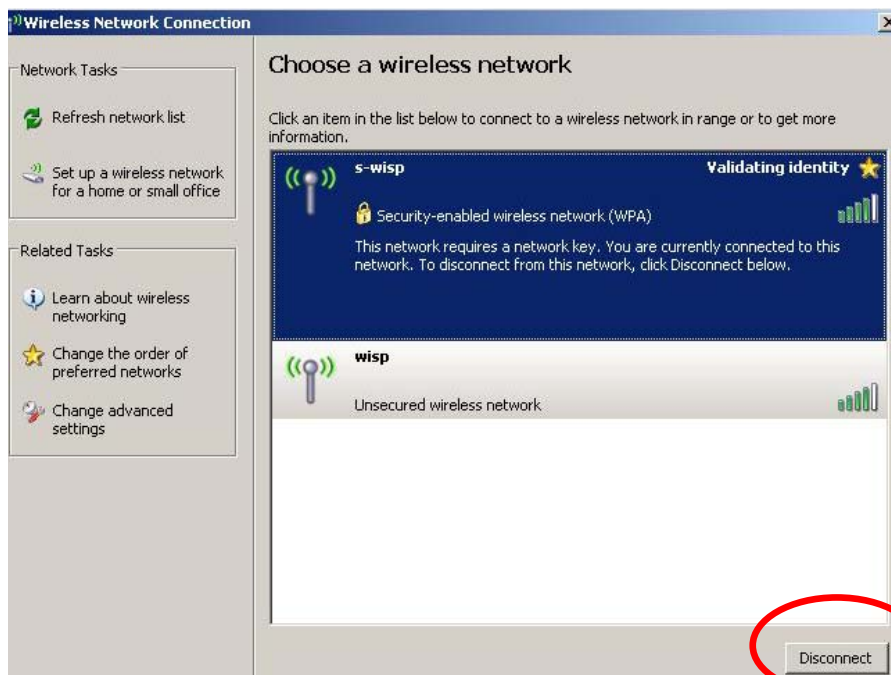
Right-click on the **Wireless Network Connection** icon and Select **View Available Wireless Networks** from the shortcut menu.



You will see the **Wireless Network Connection** dialogue box.

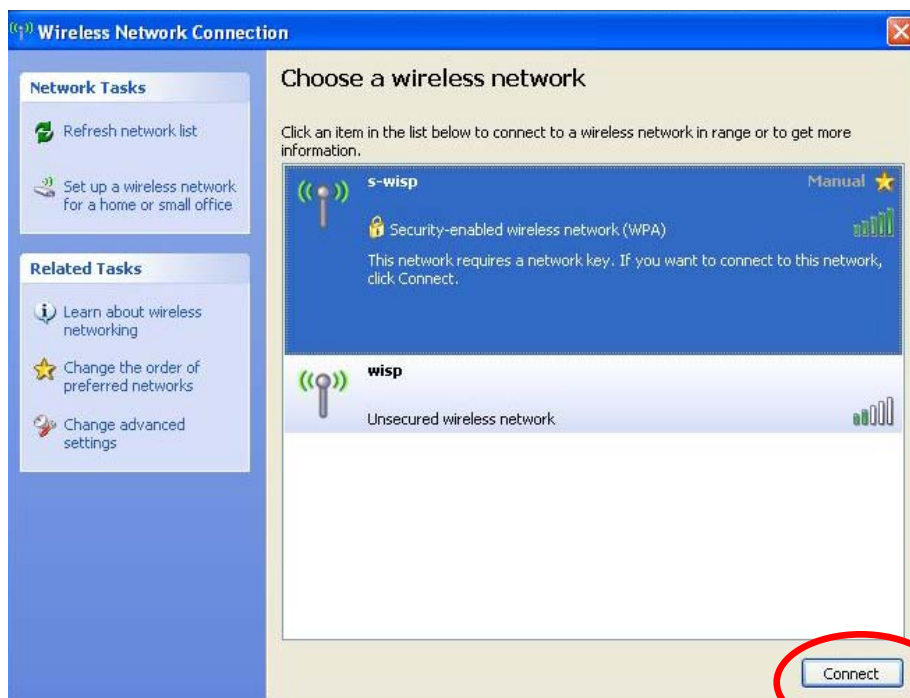
If the s-wisp entry says "Validating identity", click once on the entry to select it and click on the **Disconnect** button at the bottom right

(Double-clicking it yields the same result.)



Now, select the s-wisp entry and click the **Connect** button at the bottom right.

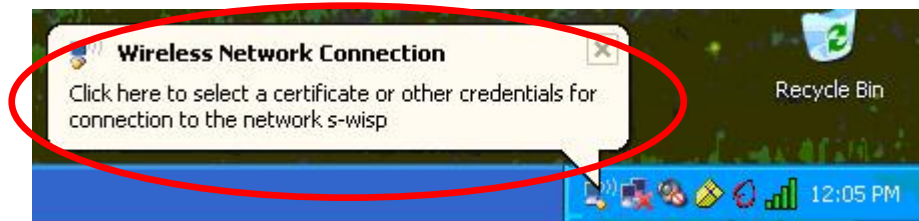
(Again, double-clicking it yields the same result.)



Windows will initiate your connection to s-wisp.



A balloon will appear above the wireless connection icon in the taskbar. **Click on the balloon.**



In the **Enter Credentials** dialogue box,

User name: Enter your Discovery or Capitan account username

Password: Enter your account password

Logon domain: Type **DISCOVERY** (for student accounts) or **CAPITAN** (for employee accounts)

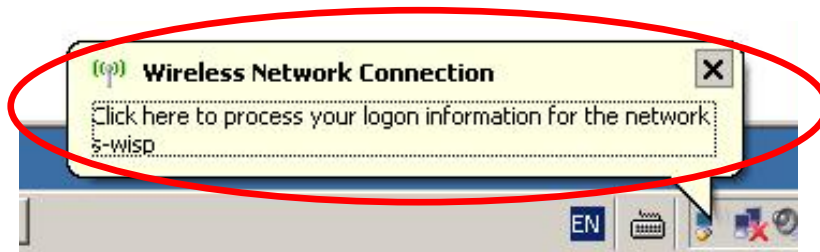
Click **OK**.

Note: You will only have to enter your credentials once, the first time you access S-WISP. If the Enter Credentials dialogue box shows up again, verify your username/password combination by logging in to a wired connection.



LIBRARY INFORMATION COMMONS

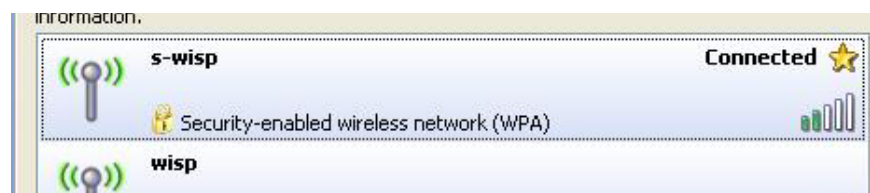
You will now see a second balloon above the wireless connection icon in the taskbar. **Click on this balloon.**



You will see a **Validate Server Certificate** message. **Click OK** to this message. **Note:** you will only see this message the first time you connect to S-WISP.



Wait while Windows finishes connecting to the S-WISP network (this may take several seconds.) The Wireless Network Connection dialogue box will indicate when you have connected successfully.



Accessing files on your U: Drive

You can access files on your U: drive (but not in your "My Documents" or Desktop folders) via S-WISP. See our handout: [Accessing your U: drive from your Laptop](#).

Printing

You can print to campus printers from your own laptops via S-WISP. See our handout: [Printing from Your Windows Laptop](#).